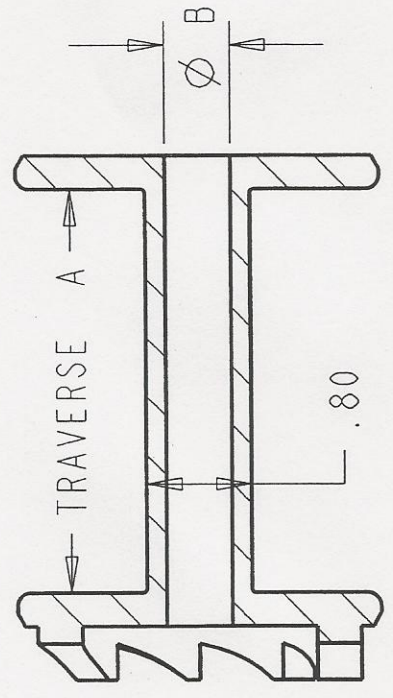
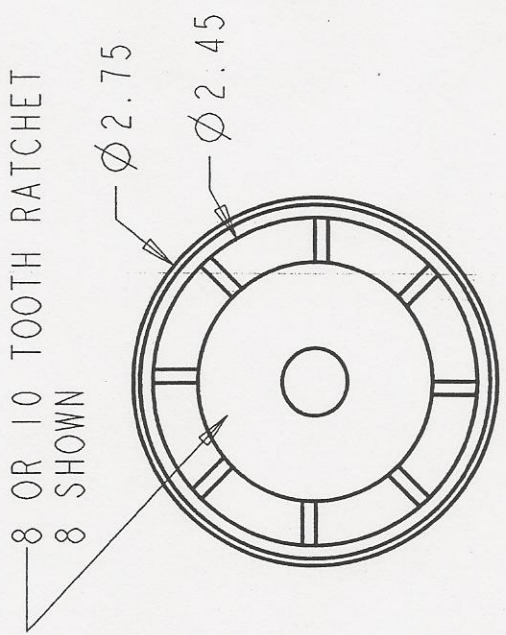



REV	DESCRIPTION OF CHANGE, DWG LOCATION	DATE	APPROVED



SECTION A-A

DIM "A"	DIM "B"
AVAILABLE IN 1/2 INCH INCRIMENTS	
7.50" - 13.00"	$\phi .510$
7.50" - 13.00"	$\phi .385$



CAVALLERO PLASTICS INC.
 1250 NORTH ST.
 PITSFIELD MA 01201
 PHONE 413-443-0925
 FAX 413-443-9586
 E-mail sales@cpplas.com

PART NAME: **2 BDX-EL**

TOLERANCE UNLESS SPECIFIED OTHERWISE INCHES
 .XXXX .XXX .XX X & FRAC. ANGLES
 ±.0010 ±.005 ±.015 ±.12 ±1°
 MILLIMETERS
 ± 1.30 ± .40 ± 3.0

CUSTOMER: P/N PART REV A

SHEET 1 OF 1 DWG #

MATERIAL: CHECKED BY: SNEZYK /date 10/11/00 APPROVED BY: TOM EHMANN /date 10/15/03