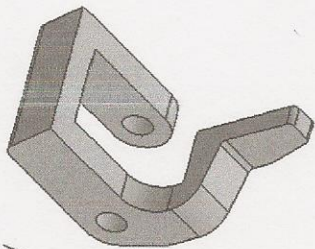
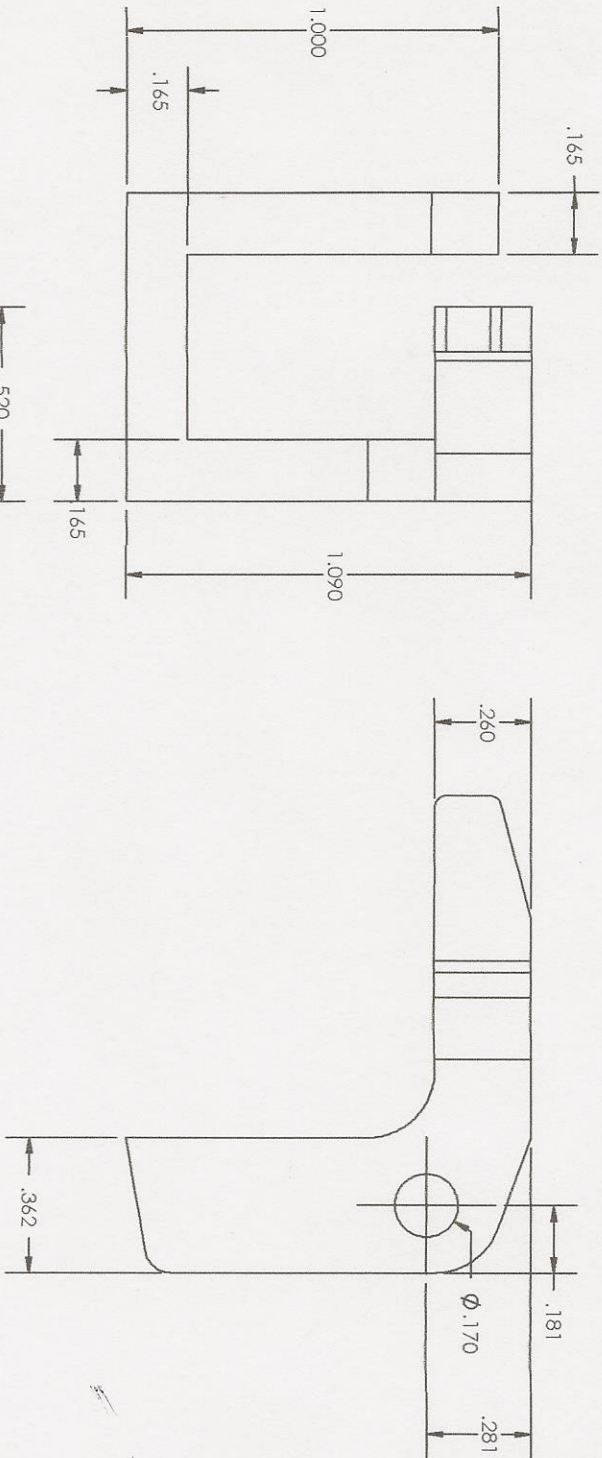
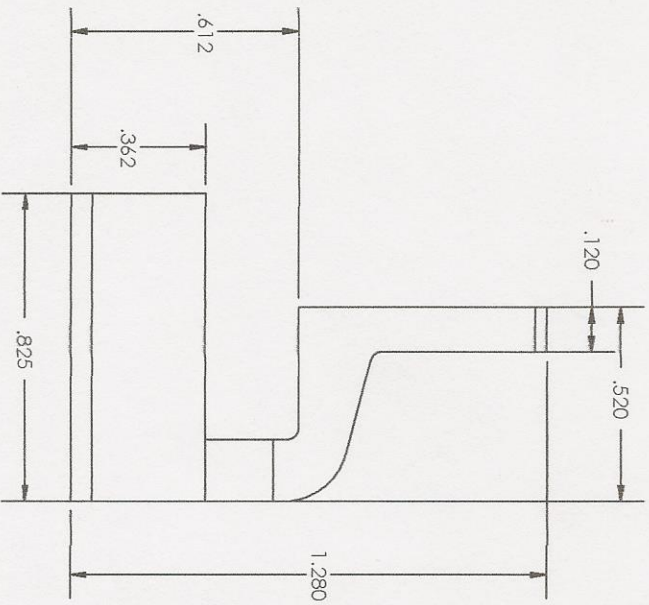


Revision			
REV.	DESCRIPTION	DATE	APPROVED
A	MAT'L wgs 402 GF Nylon 6/6	1/8/96	PJH
B	MAT'L RL4040 BKM, removed angle & radius from part print	12/30/2014	LDS
C	MAT'L: 20% PTFE 6/6 BKM wgs 101L BKM	1/7/2016	DJL



Actual Size



CAVALLERO PLASTICS INC.
 1250 NORTH ST.
 PITTSFIELD MA 01201
 PHONE 413-443-0925
 FAX 413-443-9586
 E-mail sales@cpplas.com

TOLERANCE UNLESS SPECIFIED OTHERWISE INCHES

.XXXX .XXX .XX .X & FRACTION ANGLES

± .0002 ± .001 ± .005 ± .12

MILLIMETERS

± .130 ± .40 ± 3.0

Part Name:
Coq Stop

PART # B00159 PART REV C

MATERIAL: 20% PTFE 6/6 BKM

SHEET 1 OF 1

DWG # B00159

DRAWING BY: Laurenz Saam /date 12/30/14

CHECKED BY: /date

APPROVED BY: /date

